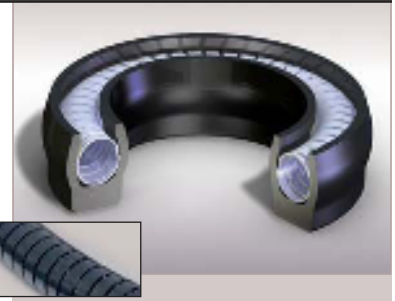


300 Series - Helical Wound Spring Design

Helical wound spring energized seals for slow speed and static applications

Helical wound spring energized seals are primarily used in static applications, slow speeds, extremely low temperatures, and/or infrequent dynamic conditions when friction and wear are secondary concerns. The spring design has excellent loading capabilities with minimal deflection.

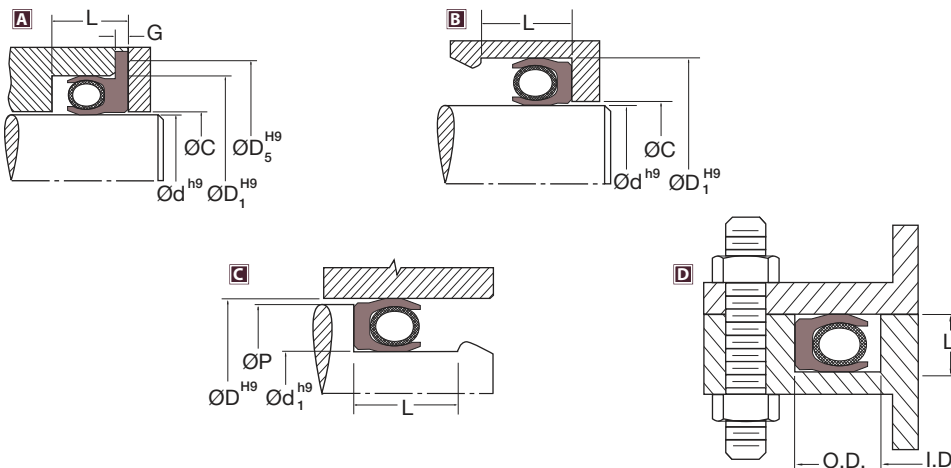
The 300 Series is available in three unique jacket materials to address a broad range of applications. Each seal jacket is used in combination with a high performance, stainless steel elliptical coil spring to ensure that positive sealing force is applied to the mating surface.



- *Unidirectional design for slow speed and static applications*
- *Helical wound spring design, high load, minimal deflection*
- *Concentrated load design when friction and wear are secondary concerns*
- *All seals made to order, no equipment modifications required*
- *Custom designs and materials available upon request*

SPECIFICATIONS		
Material (designation)	Size Range mm (inch)	up to Temperature °C (°F)
AWC400 (PTFE) Carbon & graphite	1.2 to 2,032 (0.050 to 80)	-156 to 204 (-250 to 400)
AWC630 PEEK®	1.2 to 254 (0.050 to 10)	-73 to 204 (-100 to 400)
AWC610 UHMWPE	1.2 to 2,032 (0.050 to 80+)	-253 to 82 (-425 to 180)

PEEK® is a trademark of Victrex plc.



PRODUCT PROFILES:



EPS300



EPS304



EPS305

To place an order:

Product profile: _____
 Material: _____
 Rod shaft diameter (d): _____
 Bore diameter (D₁): _____
 Flange groove depth (G): _____

To place an order:

Product profile: _____
 Material: _____
 Rod shaft diameter (d): _____
 Bore diameter (D₁): _____
 Groove height (L): _____

To place an order:

Product profile: _____
 Material: _____
 Piston groove diameter (d₁): _____
 Bore diameter (D): _____
 Groove height (L): _____

To place an order:

Product profile: _____
 Inner diameter (I.D.): _____
 Outer diameter (O.D.): _____
 Groove height (L): _____



GLOBAL SOLUTIONS, LOCAL SERVICE

Since its founding in 1884, A.W. Chesterton Company has successfully met the critical needs of its diverse customer base. Today, as always, customers count on Chesterton solutions to increase equipment reliability, optimize energy consumption, and provide local technical support and service wherever they are in the world.

Chesterton's global capabilities include:

- Servicing plants in over 100 countries
- Global manufacturing operations
- More than 500 Service Centers and Sales Offices worldwide
- Over 1200 trained local Service Specialists and Technicians

Visit our website at
www.chesterton.com

Chesterton ISO certificates available on www.chesterton.com/corporate/iso

Technical data reflects results of laboratory tests and is intended to indicate general characteristics only.
A.W. CHESTERTON COMPANY DISCLAIMS ALL WARRANTIES EXPRESSED, OR IMPLIED, INCLUDING WARRANTIES OF MERCHANTABILITY AND FITNESS FOR A PARTICULAR PURPOSE OR USE. LIABILITY, IF ANY, IS LIMITED TO PRODUCT REPLACEMENT ONLY.
ANY IMAGES CONTAINED HEREIN ARE FOR GENERAL ILLUSTRATIVE OR AESTHETIC PURPOSES ONLY AND ARE NOT INTENDED TO CONVEY ANY INSTRUCTIONAL, SAFETY, HANDLING OR USAGE INFORMATION OR ADVICE RESPECTING ANY PRODUCT OR EQUIPMENT. PLEASE REFER TO RELEVANT MATERIAL SAFETY DATA SHEETS, PRODUCT DATA SHEETS AND/OR PRODUCT LABELS FOR SAFE USE, STORAGE, HANDLING AND DISPOSAL OF PRODUCTS OR CONSULT WITH YOUR LOCAL CHESTERTON REPRESENTATIVE.



DISTRIBUTED BY:

860 Salem Street
Groveland, MA 01834 USA
Telephone: 781-438-7000
Fax: 978-469-6528
www.chesterton.com

© A.W. Chesterton Company, 2009. All rights reserved.
® Registered trademark owned and licensed by
A.W. Chesterton Company in USA and other countries.

FORM NO. EN22255

PRINTED IN USA 7/09