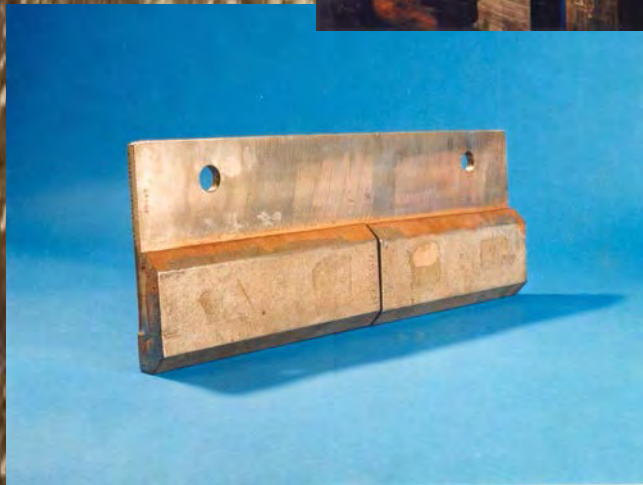




Wear Products

Photo Gallery

Bradken Engineered Products



Dozers & Graders

Dozer mould board liners



D10



D9

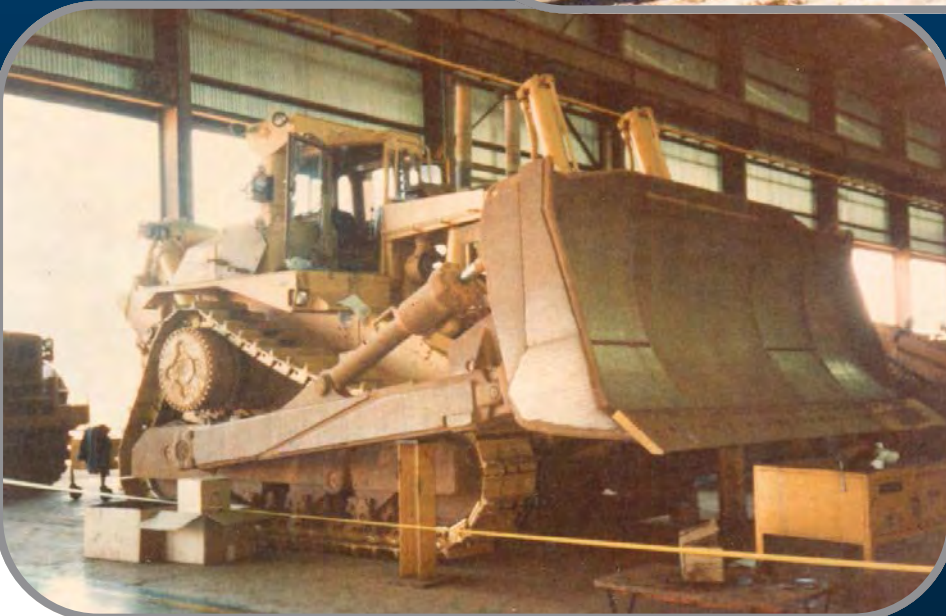


D8

Dozers & Graders



Bradken Vidaplate mould boards regularly outlast equipment lifespan.



Backhoe Buckets



A refurbished backhoe bucket fitted inside and out with Vidaplate.

New buckets utilizing Bradken wear kit Packages including Vidaplate and Vidablock products.



Front Loaders



An O&K bucket fully lined inside and out.

A Demag face shovel jaw fitted inside and out with Vidaplate.

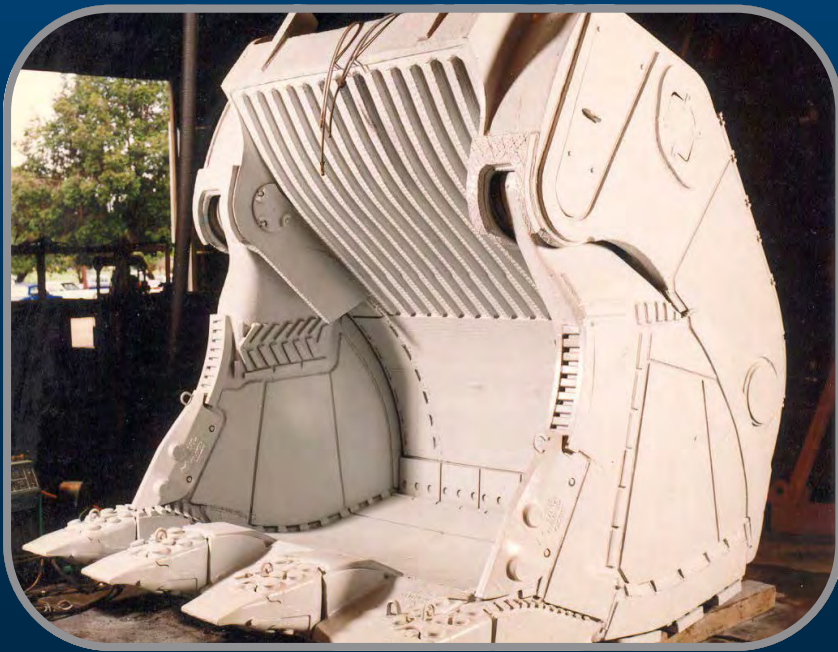


Vidaplate welded onto the adaptors.

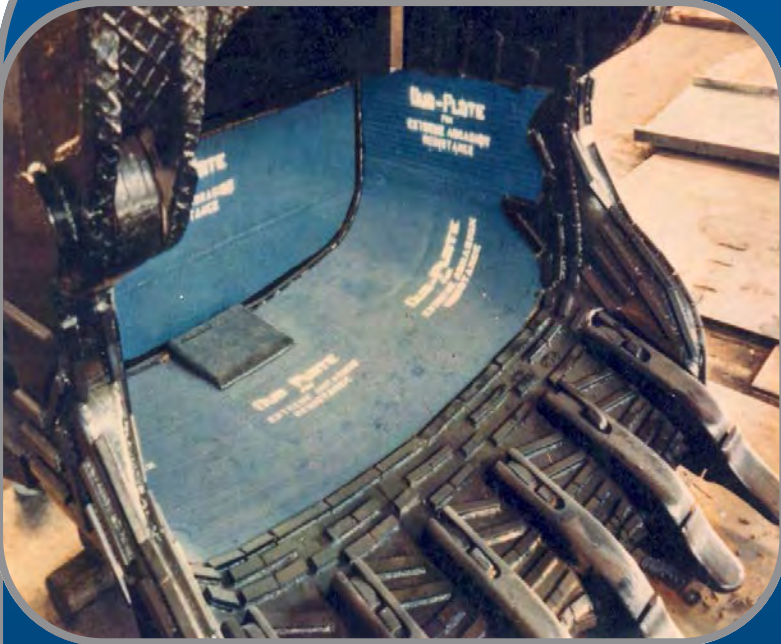
Front Loaders



Face shovel buckets lined inside and out with Vidaplate and Vidabuttons.



Dippers



Bradken Vidaplate wear kit manufactured and fitted into a dipper bucket.



Dragline Buckets



Dragline buckets lined with Bradken Vidaplate.

Underside view of a dragline bucket showing the Choky bar protection wrapped around the curved section of the bucket and 6x3 inch Vidablocks protecting the remainder.



Goonyella Riverside takes delivery of the new dragline bucket from Bradken Mining,

Bucket Wheel Excavators



Fabricated wheel reclaimer buckets.



An example of Vidaplate on the bucket of a sand mining dredge.

Bucket Wheel Excavators



Examples of Vidaplate and Chokblocks used on bucket wheels of a sand mining dredge.



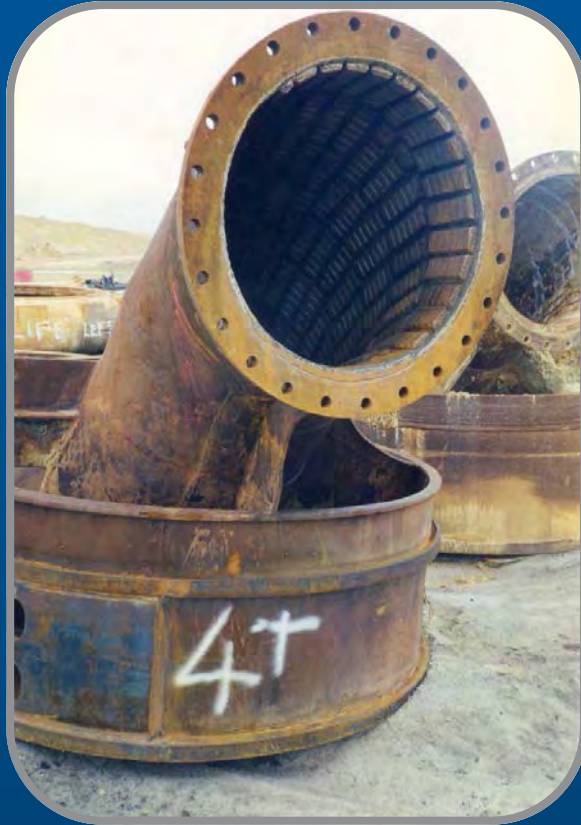
Truck Boxes



The rear one-third of a Terex dump truck.



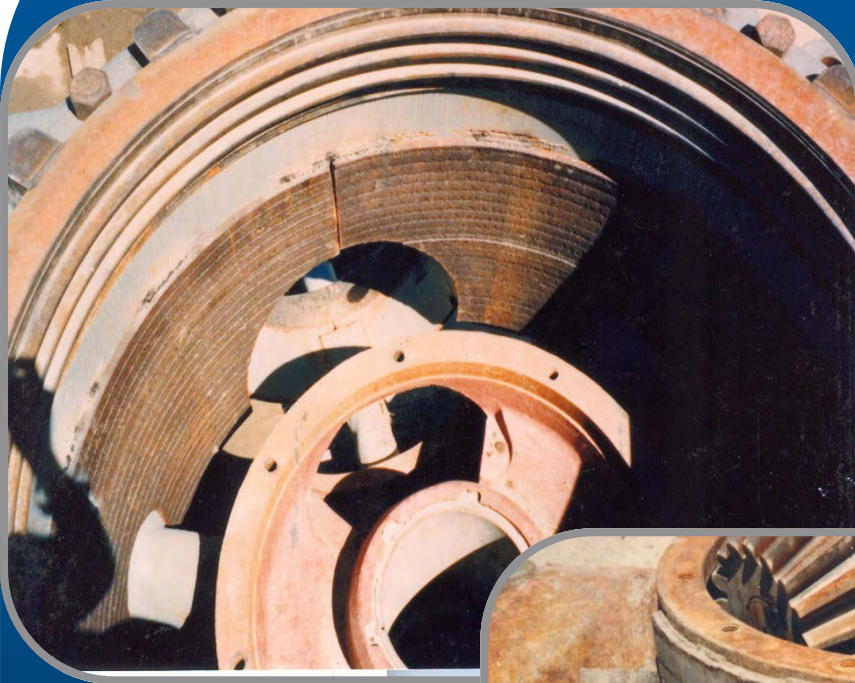
The lined dovetail area on a Cat 777 truck bed.



A dredge suction pipe bend lined with Choky block.



Crusher Components



Protection ring and disc welded onto a Barmac impact crusher rotor.

Protection around the sump area of a Gyratory crusher.



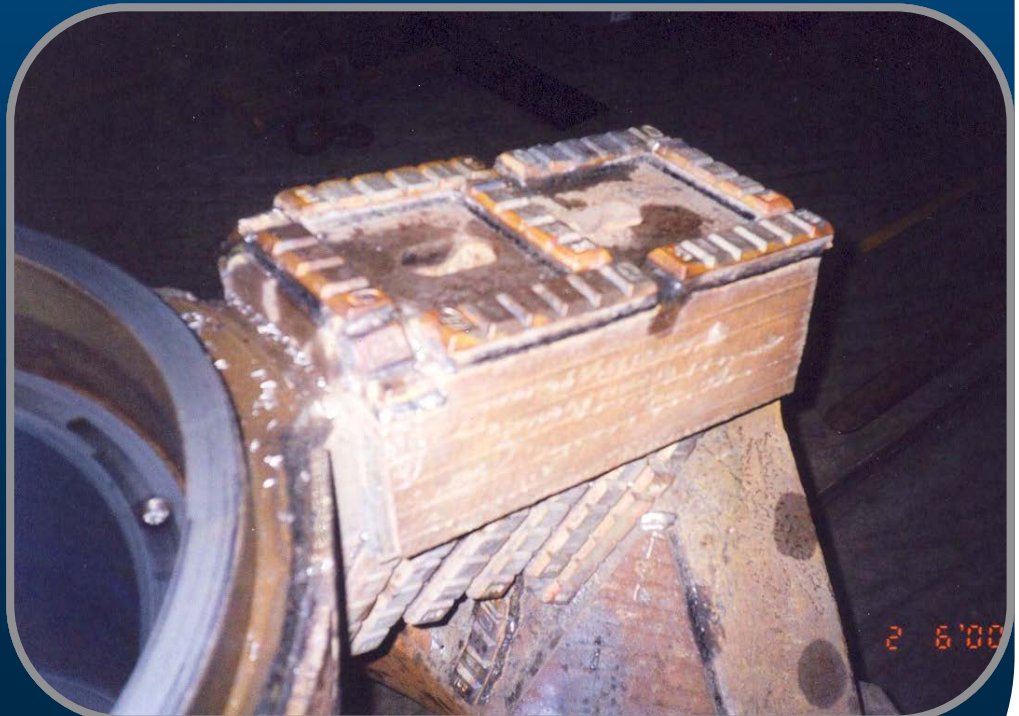
Manufactured protection ring and disc ready to be welded onto a Barmac impact crusher rotor.
(See top picture)

Crusher Components



The spider arms of a crusher used in a diamond mine protected with Vidaplate and Chokblocks.

Another view of the Vidaplate and Chokblocks on the spider arms of the diamond mine crusher.



Fan Systems



An induced draft fan impellor fitted with Vidaplate liners using the Huck Bolting system.



A fully lined fan casing.

Grid Frames

Rock Boxes

Microledging



A shredder grid frame fitted out with a bolt-in grid bar system with Vidablocks.

A round chute fabricated from Vidaplate.



A 7 foot gyratory crusher feed hopper with rock box formed inside by welding 2 x 2 x 9 inch Vidablocks to the inside edge

S c r e e n s



Teardrop shaped Vidaplate screen used in the production of Ferromanganese.

Vidaplate scalping screen fitted onto a screen deck.



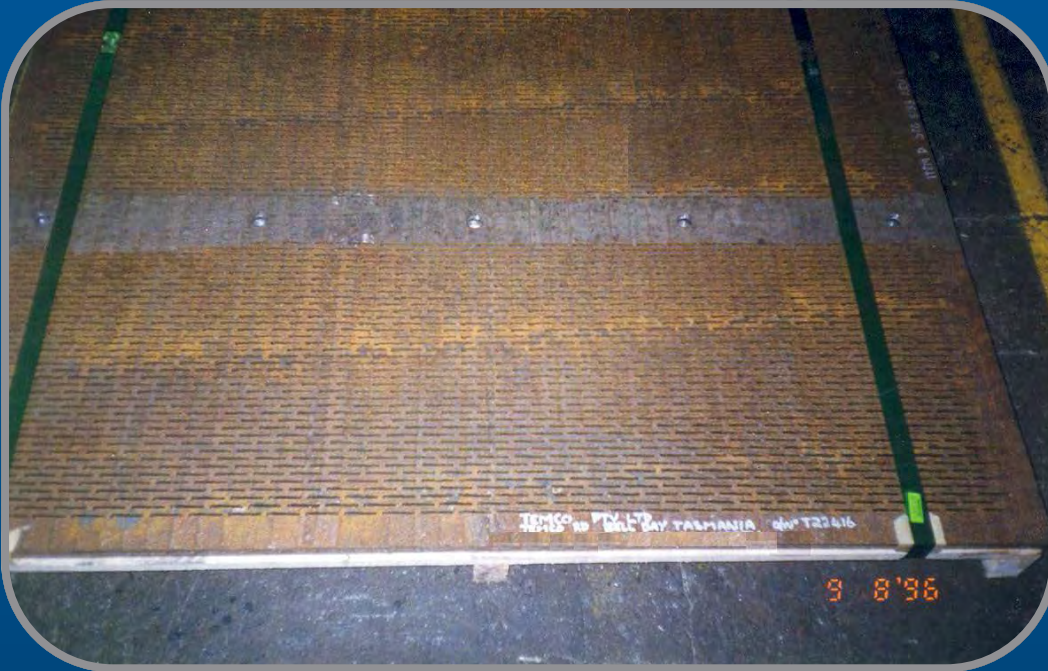
Screens



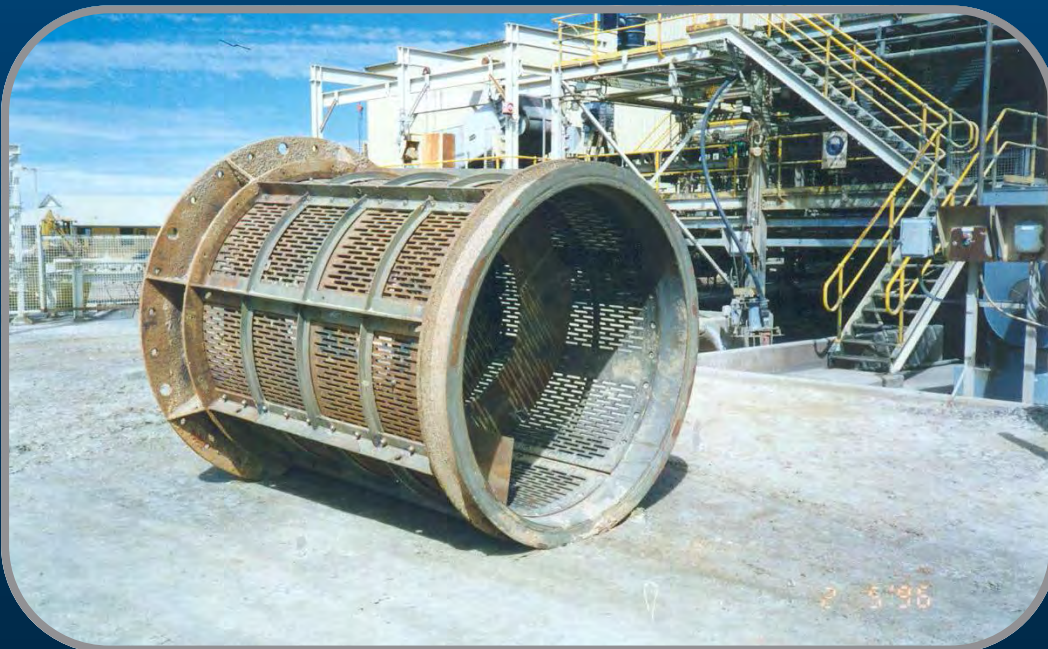
Screen plate



Trommel screen plate

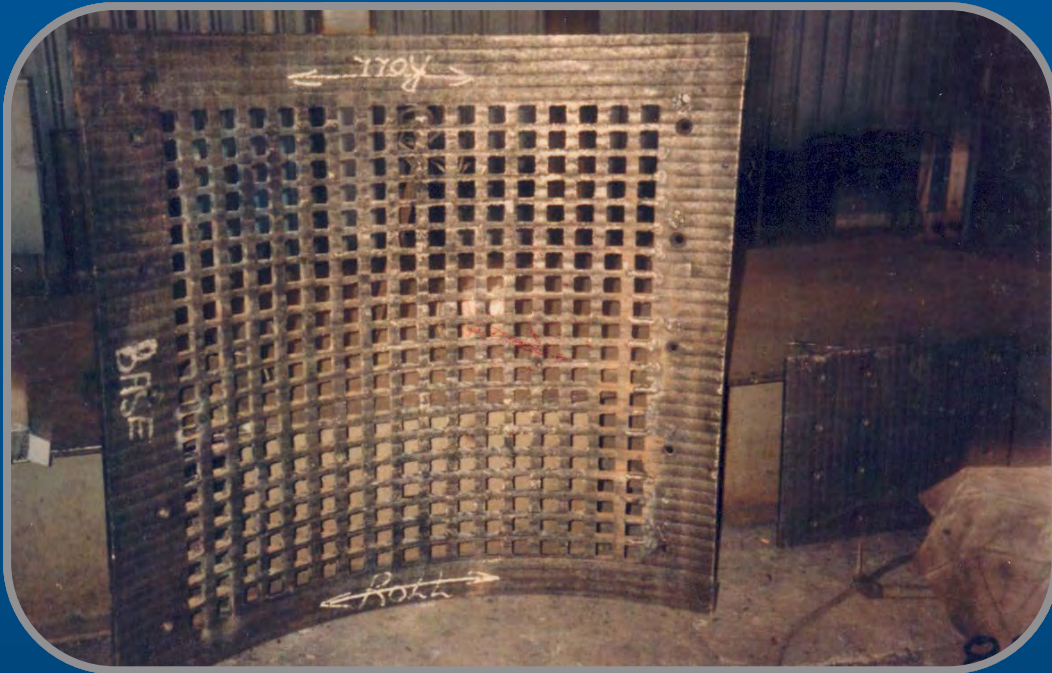


Screen plate



Trommel screen liners fitted into a Trommel that is bolted onto a mill.

Screens

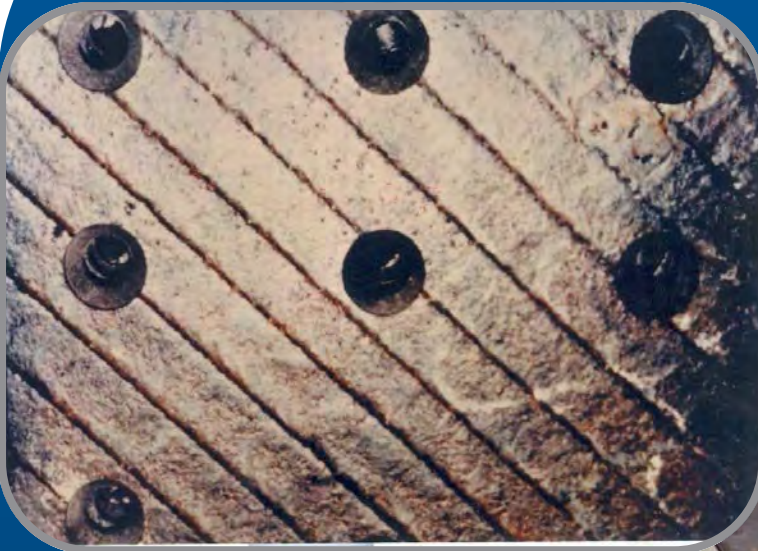


One section from a set of Trommel screen liners.



A set of Trommel screen liners.

Liners

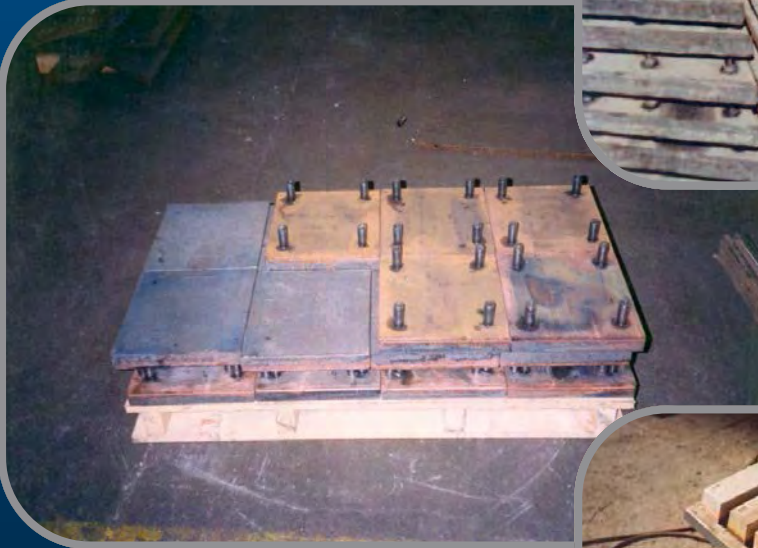


A typical liner plate showing the spark eroded countersunk holes for fitting into a chute using countersunk bolts.

A set of Vidaplate liners showing the flash butt welded stud method of attachment.



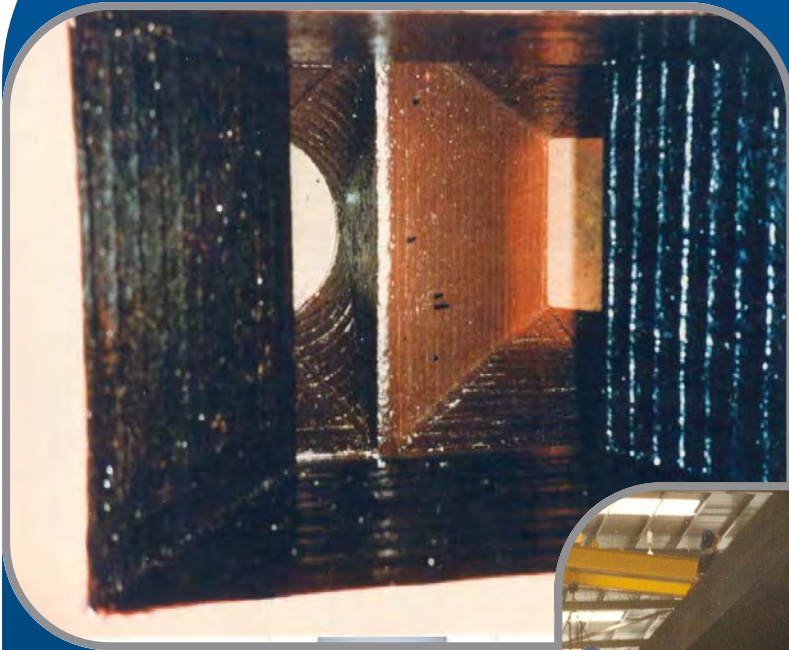
Replacement Vidaplate wear panels with threaded studs.



A range of different sized Vidablocks welded onto curved plates.



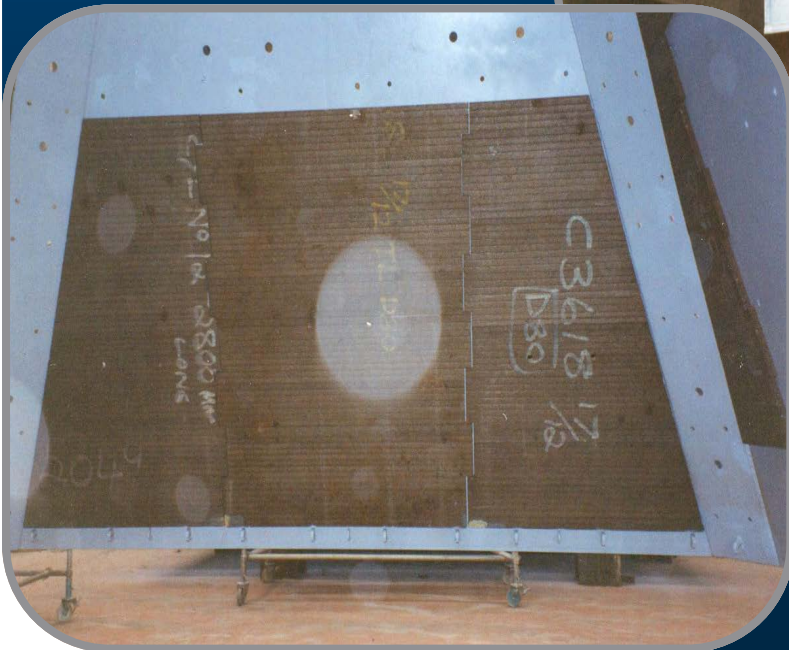
Chutes



A fabricated splitter chute.



A large Vidaplate lined chute used in the iron ore industry.



Liner plates on the inside of the chute pictured above.

Chutes

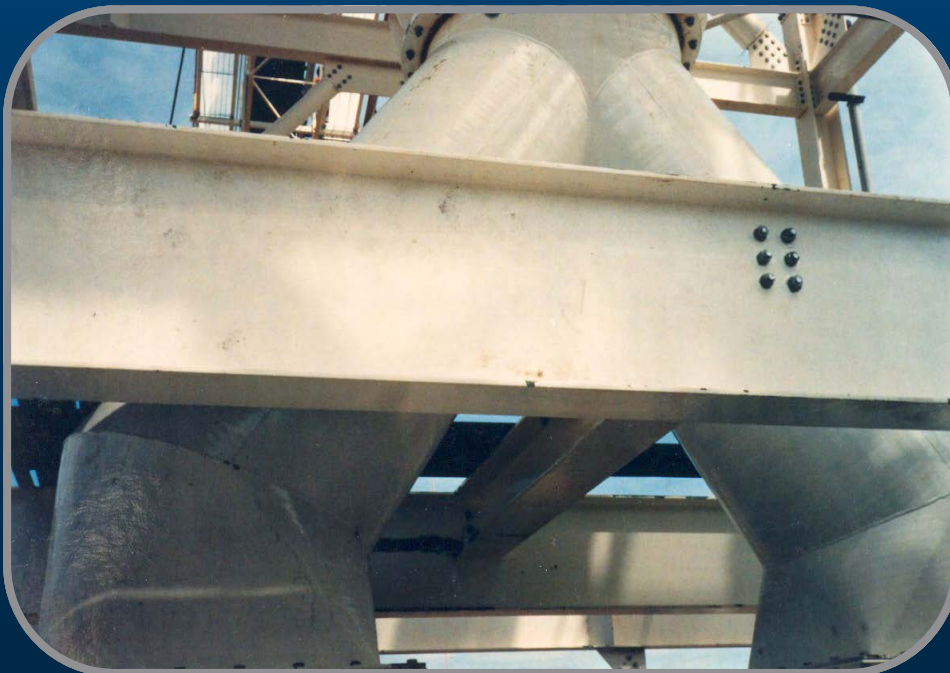


Fabricated Vidaplate chutes.





Fabricated Vidaplate chute.



Chutes



A manufactured classifier chute.

Stud attached liners on a rotary breaker feed chute.



Slurry chute



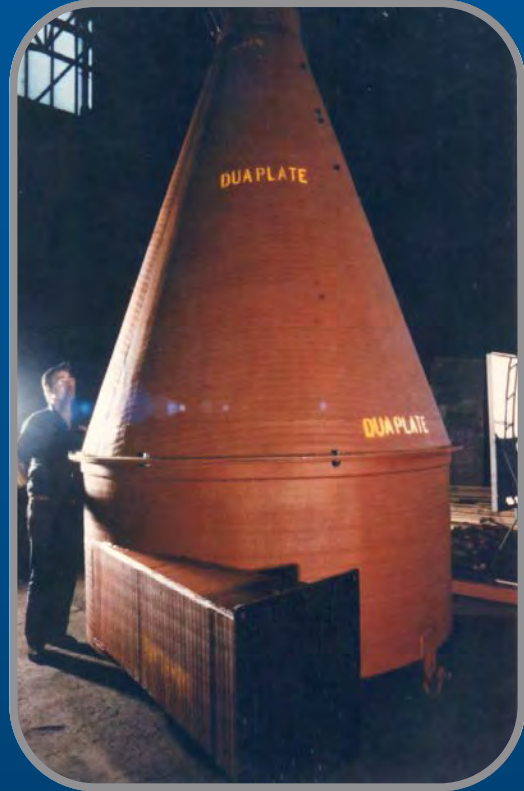
2x2x9 inch Vidablocks fitted into a chute that forms part of a fines reduction plant at an iron ore port.



Cones & Cylinders



Cyclones fabricated for use in a cement manufacturing plant. The cones, cylindrical section, and inlet are all made from Vidaplate.



Manufactured cyclone for use in the paper and pulp industry.



Fabricated classifier cone that fits into a Raymond bowl mill.

Pipes & Fittings



A fabricated Vidaplate pipe section.

A straight pipe, elbow and T section fabricated from Vidaplate and fitted to a sand mining dredge.



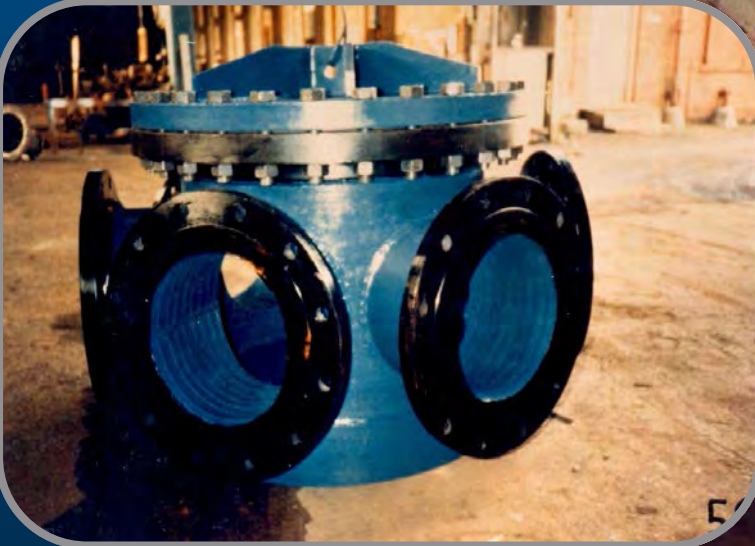
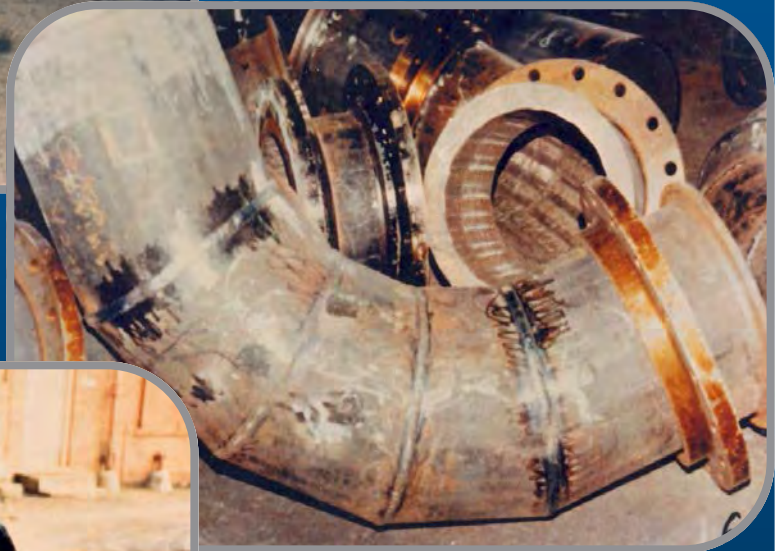
Straight pipe sections machined on the ends for Victaulic couplings.

Pipes & Fittings



A fabricated Y section of pipe used in a copper smelter.

A fabricated lobster backbend pipe.



A fabricated pipe distribution box. The body and branches are all manufactured from Vidaplate sections.

Fabricated replacement back sections that can be fitted to the back of a lobster back bend when it has worn away.



Conveyor Flights



Heated flight section of a screw conveyor being placed into the male and female hot pressing die to have the helix and pitch pressed into it.

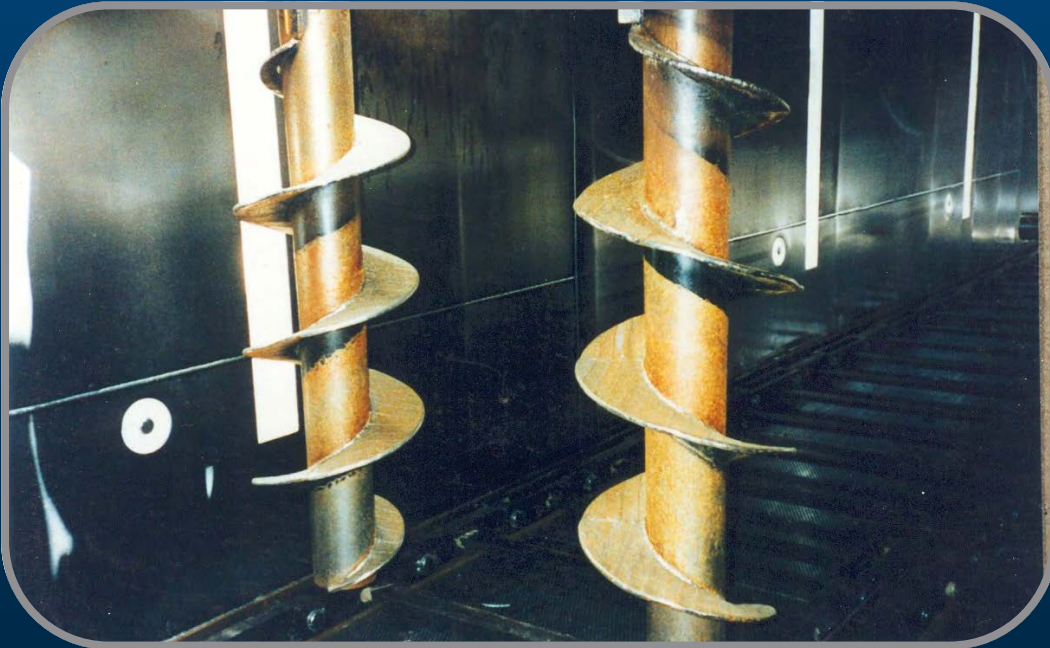


Flight sections are welded onto a tube section to complete the screw conveyor.

Conveyor Flights



Replaceable bolt on screw conveyor flights



Vidaplate screw conveyors in a sugar cane feed chute

Hammers

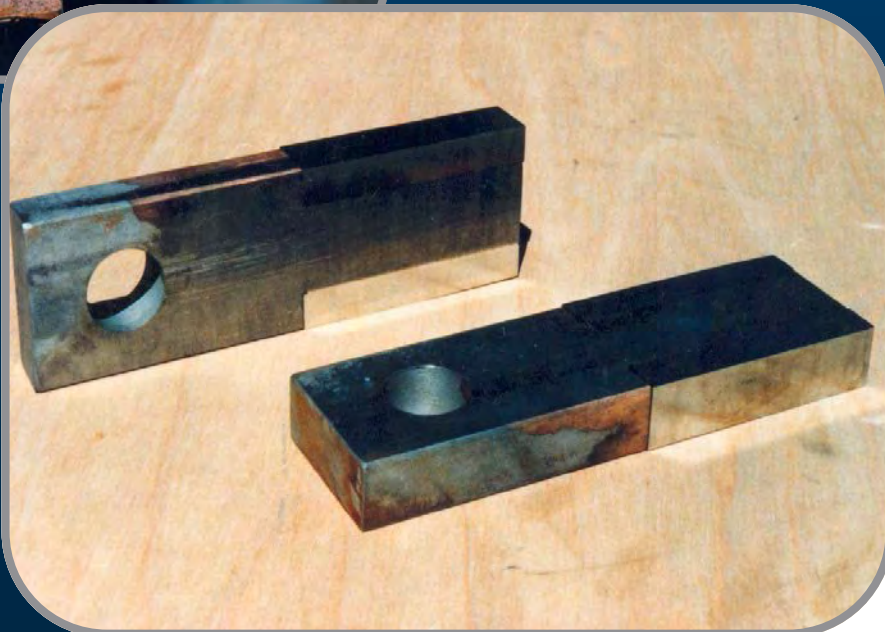
Inside of a cane shredder with Vidaplate hammer tips.



A sugar cane shredder hammer shank fitted with a 90mm x 90mm bolt on Vidablock.



Sugar cane leveling knives with Vidablock inserts vacuum brazed into them.



Hammers

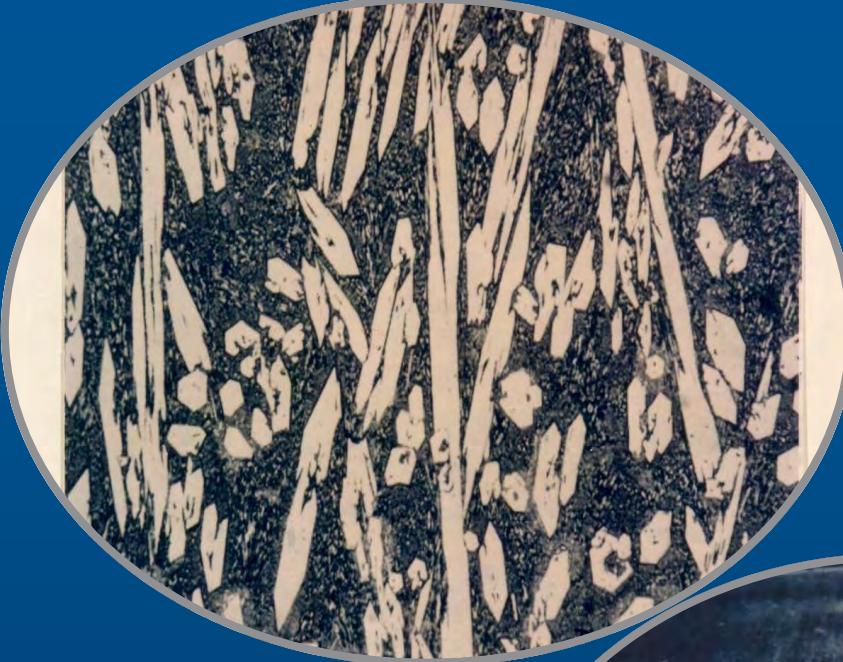


A four hammer rotor fitted with Duablock hammer tips that are positioned with a key and bolted into place.



Before and after shots of two hammers. The left is manually hardfaced. The right is fitted with Vidaplate on the front and bottom faces to protect the shank while the bolt in Vidablock hammer does the crushing.

Technical



A typical Vidaplate microstructure showing the carbide (white streaks) structure and the matrix (black areas) and secondary carbides.

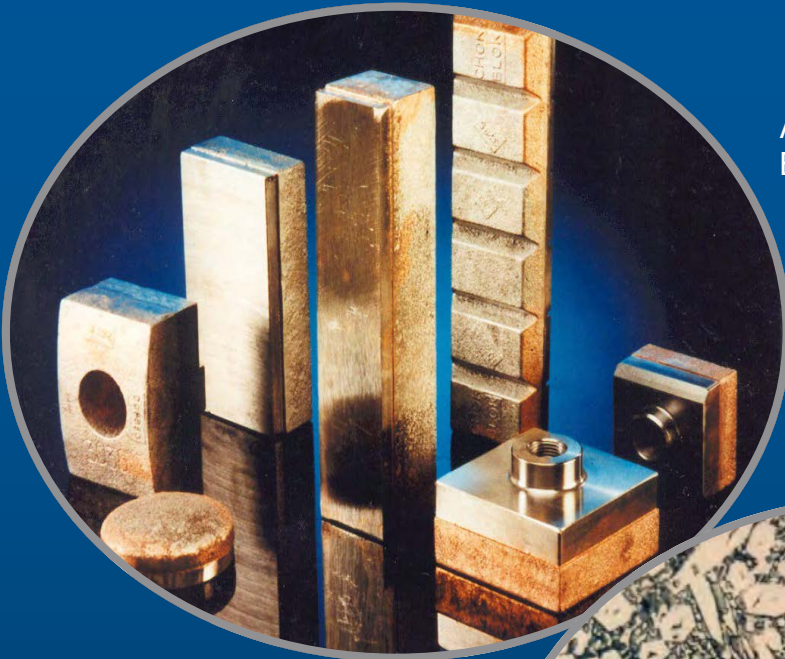
A comparison test showing the superior wear characteristics of Vidaplate over the Quenched and Tempered material on the rear third of a dump truck bed.



A vacuum furnace being loaded. Copper shims are used in the brazing process.

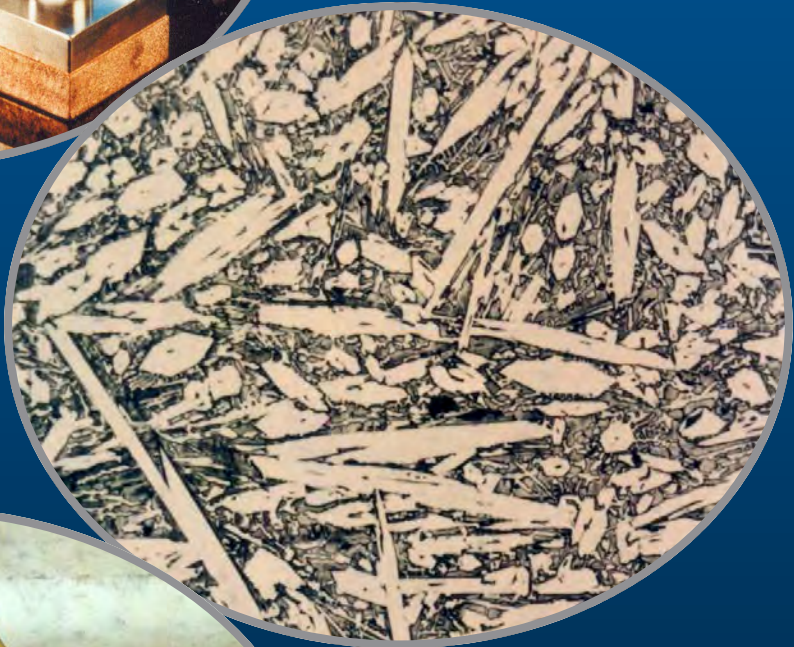
Mild steel backing plates, button and chokblock castings are seen in the foreground.

Technical



An assortment of available Bradken Vidablock products.

A typical Vidablock microstructure showing the carbide (white streaks) structure and the matrix (black areas) and secondary carbides.



Chokblocks with notched mild steel backing plates.

The notches and grooves are lined up so the block can be broken easily and formed onto irregular shapes.



Bradken Engineered Products

3611 South Warner Street
Tacoma, WA 98409
T +1 253 475 3464
F +1 253 475 3466

12200 NW Ambassador Drive
Suite 647
Kansas City, MO 64163
T +1 816 270 0700
F +1 816 270 0799

Bradken Headquarters

2 Maud Street Mayfield Wed NSW 2304 Australia
PO Box 105 Waratah NSW 2298 Australia
T +61 2 4941 2600
F +61 2 4967 5003

W bradken.com